

FE230

Door holder, surface mount, 400N, with release button

General

The FE230 is a surface mount door holder, in a Bayblend housing, which offers a 400N holding force and a release button. Cable entry is possible from the back or from the sides, and the release button can be located at the top, or one of the sides.

Magnet construction

The magnet is constructed with a pressed coil and antiremanence pin, giving it a protection of IP54. The protection diodes are integrated into this construction.

Housing

The plastic housing is manufactured from Bayblend and contains 30% PA6 glass fiber, which makes it much stronger than standard ABS. Bayblend offers high heat resistance, high impact and notched impact strength, and high stiffness and dimensional stability.

Installer friendly

For practical ease of installation, the door holder comes complete with electrical screw terminals. - The housing is predrilled in a practical, standard format for rapid mounting. - The door holder is supplied complete with a keeper plate, which offer angular adjustment.

The release button can be position in three different locations: top, left or right

Cable entry can be done in four different locations: back, top, left or right.

Approvals

The FE230 is fully approved according to EN1155.



Standard Features

- Low power - 1.6 W
- 400 N holding force
- Anti-remnant ejector
- Spark suppression diode and reverse polarity protection
- Release button
- EN1155 approved
- Keeper plate included

Keeper plate with angle adjustment

Flexible and with adjustable angle $2 \times 60^\circ$, diameter 55 mm, mounting plate 55x55 mm

This model is designed for applications where the door has a stop bracket. Due to the joint the keeper plate can be adjusted and set with 60° each into the respective direction. Surface ground and protected against corrosion.



Specifications

| | | |
|-----------------------------|---------------|------------|
| Supply | 24 VDC | Duty cycle |
| Power | 1.6 W | |
| Holding force (N) | 400 | |
| IP rating | | |
| Magnet | IP54 | |
| Connection | IP42 | |
| Dimensions (mm) | | |
| (H x W x D) | 110 x 85 x 38 | |
| Release button | Yes | |
| Spark suppression diode | Yes | |
| Reverse polarity protection | Yes | |
| EN1155 | Yes | |
| | 100% | |

Ordering Information

| Part No. | Description |
|-----------|--|
| FE230 | Door holder, surface mount, 400N, with release button |
| FE225-150 | Universal bracket wall or floor mounting - 150mm |
| FE225-300 | Universal bracket wall or floor mounting - 300mm |
| FE235 | Door holder, square base, 400N |
| FE240 | Door holder, flush mounting, 400N |
| FE245 | Door holder, wall mount, 400N, with release button |
| FE250 | Door holder, floor mounting, 400N, with release button |
| FE260-175 | Door holder, universal adjustable tube, 400N, with release button, 175mm |
| FE260-325 | Door holder, universal adjustable tube, 400N, with release button, 325mm |
| FE260-475 | Door holder, universal adjustable tube, 400N, with release button, 475mm |
| FE290 | Door holder, surface mount, 400N, mains powered |

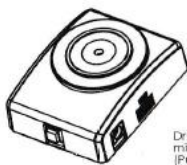
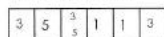
Technische Daten:
 Zeich.-Nr. GTR048000A07 / FE230

(Technical Data:
 drawing number: GTR048000A07 / FE230)

Elektromagnetische Komponente nach VDE 0580
 (Electromagnetic components based on VDE 0580)

EN1155 (1997+A1:2002)

CE 0786
 CPD 20435 08

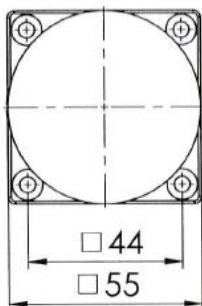
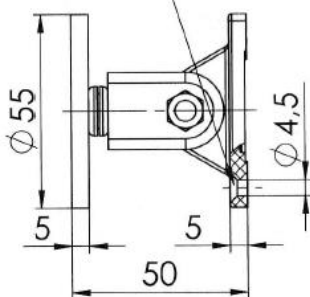


Drucktaster unten, Kabeldurchführung mit Tülle an der Seite.
 (Push-button underside, cable bushing with spout on the side.)



Drucktaster seitlich, Kabeldurchführung mit Tülle an der Unterseite.
 (Push-button on the side, cable bushing with spout underside.)

Senkung
 (counterbore)
 DIN 74-Am4



| | | |
|------------------------------------|--------|--|
| Nennspannung: (nominal voltage) | 24 VDC | mit Unterbrecher-Drucktaster (with breaker push-button) |
| Einschaltdauer: (duty cycle) | 100% | Tüllen lose mitgeliefert (spouters delivered loosely) |
| Nennleistung: (nominal power) | 1,6 W | |
| Haftkraft: (holding force) | 400N | |

